



25 years
of Preservation

West Adams Matters

West Adams' Only Greene & Greene Opens Its Doors

Saturday, June 6 10 a.m. to 4 p.m. (Last ticket sold at 1 p.m.)

The Arts and Crafts style reached its apotheosis in Southern California, in the homes designed splendidly by the architect brothers Charles Sumner Greene and Henry Mather Greene. Charles and Henry Greene are widely considered to have brought high-art aesthetics and exquisite craftsmanship to the American Arts and Crafts Movement, particularly in its expression in the "Ultimate Bungalows" – most famously the Gamble House, the Blacker House and the Robinson House, all in Pasadena.



Yet the brothers Greene also designed more modest Craftsman residences, primarily in Pasadena and elsewhere in Southern California. Most of these residences remain in private hands, seldom open to the admiring public. But now Greene and Greene aficionados have a chance to see the only extant Greene & Greene-designed home built in Los Angeles proper. The Lucy Wheeler House, a two-story bungalow erected in 1905 in the Harvard Heights section of the West Adams District, will open its doors during WAHA's annual Spring Historic Architecture Tour, *Landmarks of West Adams*, on Saturday, June 6.

(continued on page 6)

Going Native

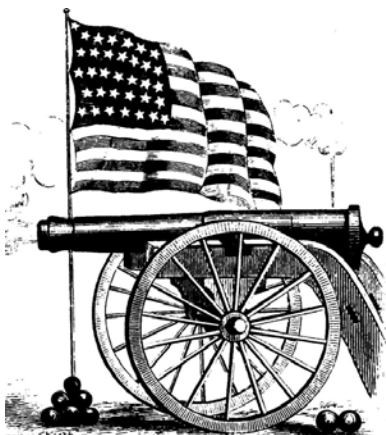
by Lore Hilburg

Last fall, I changed my front yard from an expanse of grass, hedges, birds of paradise and lilies to a garden of native plants. Why do that? There are several altruistic reasons. Save water and runoff; no pesticides or insecticides; provide a haven for birds and insects who have been forced to feed and live in foreign plants.

Little did I envision the great, personal benefits. I no longer have snails. I have lots of beautiful flowers that attract hummingbirds, butterflies and pollinating bees. My plants are aromatic. When I walk out in the morning, I feel like I am in a mountain meadow. I have two varieties of lilac, along with fuchsia, penstimonies and hummingbird sage, all in bloom. I also have three varieties of sagebrush, one of which is called Cowboy Cologne. It is called that because of the fresh, minty aroma, which also repels mosquitoes. I have four varieties of manzanita and four kinds of sage. I have one oak tree, an endangered variety called the Englemann Oak. It will provide a canopy of shade someday.

What does my garden not have? There are no succulents or cactus. So if you thought a California native garden must look sparse and gray, with little color

(continued on page 11)



WAHA's Patriotic 4th of July

Saturday, July 4 1 to 4 p.m.

1909 S. Harvard Blvd. (West Adams Heights - just south of Washington Boulevard)

Bring the kids -- your own or someone else's -- and wear your summer whites or patriotic attire at WAHA's annual 4th of July picnic. Owners Todd Karr and Gina Pitrello are hosting WAHA's annual event celebrating America's birthday at their fab West Adams Heights property. Their three-story Craftsman, now known as "Invisible Manor," was built in 1908 and designed by famed architect Sumner P. Hunt of Hunt and Eager. Set on a 1/3-acre lot, the manse has almost 30 rooms in 6,300 square feet. It features extensive woodwork by prominent Southern California interior designer John B. Holtzclaw. For almost thirty years beginning

(continued on page 5)

Table of Contents

STEPPING OUT

Million Dollar Theater Fetes Tony Curtis. 4

PRESERVATION MATTERS

Second Church of Christ, Scientist Reading Room 8

AROUND THE HOUSE

Garden and Paint Contests. 11

WAHA MATTERS

Living History Tour Needs You! 12

Member Discounts. 12

COMMUNITY MATTERS

In Memoriam: Melody Jackson 13

WAHA BOARD MEMBERS 14

WAHA CLASSIFIEDS. 15

WAHA CALENDAR. 16

Newsletter Staff

Laura Meyers, *Editor and Layout*, ph: 323-737-6146,
Lauramink@aol.com

Jim Robinson, *Director of Publications*, ph: 213-663-3022

Hilary Lentini, *Art Director*, ph: 323-766-8090,
hilary@lentinidesign.com

Suzanne Henderson, *Resources*, ph: 323-731-3900,
westadamsgoddess@aol.com

Judy Tedrick, *Advertising Director*, ph: 213-748-5627,
judytedrick@yahoo.com

WAHA Members Meeting on June 8

Further to our letter which was inserted in the May issue of *WAHA Matters*, the Board of Directors extends an "Invitation to a Conversation" to all members of WAHA. A special membership meeting is scheduled for Monday evening, June 8, at 7 p.m. at the Upstairs Living Room of Eureka Cafe, 4035 West Washington Blvd, just east of Crenshaw Boulevard. Coffee will be served. ●

Cultural Heritage Ordinance Hearing Slated for June 11

The city's Planning Commission is set to weigh in June 11 on giving historic monuments throughout the city the same protection against demolition already enjoyed by non-monument properties in historic preservation overlay zones (HPOZs).

The new protection is part of a package of proposed changes to the city's Cultural Heritage Ordinance, the first significant overhaul of that legislation since it was passed by the City Council in 1982. Other changes would clarify criteria for historic designation and provide earlier notification to property owners. (The complete ordinance is at www.preservation.lacity.org.)

The ordinance changes were recommended for approval by the city's Cultural Heritage Commission in November, and had been scheduled to go to the Planning Commission March 12. But some property owners called for more time, and the deadline was extended to allow two more public workshops in April.

According to the Office of Historic Resources, the new ordinance will significantly improve the review process for owners of Monument properties, in the following ways:

- Well over 90 percent of requests for alteration of monument properties will continue to be signed off administratively under the new ordinance, just as they are today -- usually on the same day, "over-the-counter" or electronically.

- The new ordinance will create greater clarity for owners and make clear that certain work, such as ordinary maintenance and repair, is exempt from review altogether.

- The historic preservation standards on which approval is based will not be changing. These standards, used in every local government's preservation law, are meant to allow significant change to historic properties, not to "freeze" historic buildings in time.

- Demolition of historic-cultural monuments may still be approved, and may be approved even if no economic hardship exists.

- The new ordinance will, for the first time, ensure that property owners have the right to participate in all public hearings on the potential designation of a property as a monument.

- The ordinance will create a more "up front" system of preservation review, rather than continuing to surprise owners with review of proposed work only at the "back end," at a project's permit phase.

- Owners of designated properties will also, for the first time, have a right of appeal to the City Council if they disagree with the interpretation of staff and the Cultural Heritage Commission.

If approved by the Planning Commission, the ordinance changes will go to the City Council for final approval. ●

President's Message by Jim Robinson

It's almost summertime, and the living is NOT easy. Not if you're into historic preservation, and trying to juggle all its issues, tours and celebrations. Our event calendar is overflowing with interesting – mostly pleasant – things to do. Here are some things I plan to attend:

Saturday, May 30 – By the time you read this, you may have missed it. It's the city's eighth annual Historic Preservation Overlay Zones Conference, the first time this all-day event was opened to the public. Along with the usual refresher sessions for HPOZ board members, the sponsors – the Department of Planning and the Los Angeles Conservancy – have organized workshops for people who simply want to learn how these important preservation tools work, or how to form their own. The \$20 registration fee includes continental breakfast, lunch and a walking tour of Pico-Union. The event ran all day at the historic Angelica Lutheran Church, 1345 S. Burlington Ave.

Sunday, May 31 – WAHA's annual Preservation Brunch took place this year at the Heritage Square Museum at 3800 Homer St. In case you've never been there, it's that remarkable collection of rescued, 19th century buildings on the east side of the Pasadena Freeway, at Avenue 43. Worth a visit any day, but combined with food, friends and a special exhibit on Chinatown, Bunker Hill and Chavez Ravine? It was irresistible! WAHA slated a brunch with a brief presentation on the exhibit at noon. It's also when we gave out WAHA's Martin Eli Weil Preservation Award, named for that pillar of WAHA who passed away in February. More on our remarkable recipients, Jean Frost and Jim Childs, in the next issue.

Tuesday, June 2 – Speaking (again) of HPOZs, this is when mine meets. No need to mark it on your calendar, but I wanted to mention it. I chair the University Park HPOZ board, and the three other board members – John Arnold, Jean Frost and David Rapoza – are also WAHA members. We meet twice a month, making decisions and recommendations on exterior changes to a historic neighborhood. Many other WAHA members sit on their own HPOZ boards. It's where the nitty gritty work of local preservation takes place.

Saturday, June 6 – A fun day! It's WAHA's annual June tour – a drive-yourself (or bike-yourself) visit to more than half a dozen of West Adams' historic sites, including the city's only Green & Greene-designed house, where Martin Weil lived. You'll find more details in this newsletter and on our web site, www.WestAdamsHeritage.org.

Thursday, June 11 – A very serious day. L.A.'s Planning Commission is set to consider a much-postponed package of amendments to the city's Cultural Heritage Ordinance. The most important change would allow the city to prohibit demolition of a designated historic monument – a protection already given to contributing structures in historic preservation overlay zones. WAHA will appear in support of the changes. The meeting starts at 8.30 a.m. on the 10th floor of City Hall. ●

Bob Bortfeld Nominees Sought

WAHA's highest award, the Bortfeld Award, named after WAHA co-founder Bob Bortfeld, is presented to a member who has given special service to the community in the prior year and over time.

Two decades ago, when Bortfeld purchased his home in a long-ignored neighborhood, he had a vision for this community. Bortfeld felt that with strong community activism and a shared love for old houses, West Adams could be one of L.A.'s best neighborhoods. West Adams Heritage Association established the Bortfeld Award to honor his vision and inspiration after he passed away in the late 1980s.

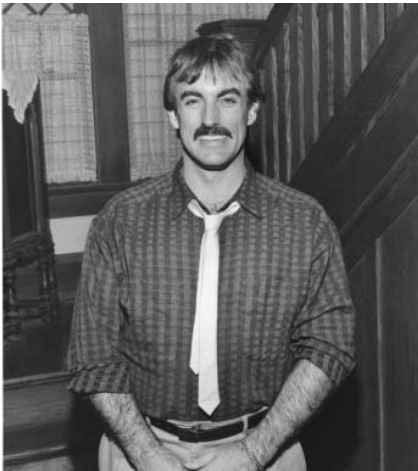
Nominations now are being sought for this annual award. The nominee must be a member in good standing who demonstrates the following qualities: 1) consistent and visible leadership in WAHA and the preservation community, 2) an obvious commitment to preservation, 3) leadership in deed, not just title, 4) notable accomplishments/contributions over a range of activities, not just in one particular activity, and 5) an ability to bring people together to address issues and resolve problems.

Typically, the candidate would not currently be a WAHA Board member.

The award has been presented in the past to Kathleen Salisbury, Harry Anderson, David Raposa, Harold Greenberg, Lindsay Wiggins, Jodi Seigner, Jon Rake, Lana Soroko, Norma Reynolds, John Kurtz, Audrey Arlington, Jim Meister, Joe Ryan, Laura Meyers, Linda Scribner, Corinne Pleger, Peggy King, Leslie Evans and Jennifer Charnofsky, Suzanne Henderson, Ed Trosper, and Pat Karasick. As you can see by this listing, all former Honorees have had leadership roles in WAHA and have undertaken a diverse range of activities in the organization and in the community at large.

Nominations should be submitted in writing via e-mail to president@westadamsheritage.org or letter sent to WAHA's office, 2263 S. Harvard Blvd., Historic West Adams, Los Angeles, CA 90018. Please briefly describe the activities your candidate has undertaken for West Adams Heritage Association and in the West Adams community, and explain why you believe he or she should be chosen for the Bortfeld Award. The winner will be selected by WAHA's current President, Membership Chair, and last year's winner, Pat Karasick.

Deadline for submission is FRIDAY, JUNE 19. ●



Bob Bortfeld

Stepping Out

A Day at the Movies — It's Magic and It's Hot

Saturday, June 13

Showtimes: 2:30 p.m. and 7:30 p.m.

Million Dollar Theater, Broadway (Downtown)

What's better than seeing vintage movies in vintage theaters? We can't think of anything better! Join the Los Angeles Historic Theater Foundation and the Jules Verne Festival for a matinee screening of *Houdini*, starring Tony Curtis and Janet Leigh, complete with a stage show and Tony Curtis in person! In the evening, it's the 50th anniversary screening of *Some Like It Hot*, starring Tony Curtis, Jack Lemmon and Marilyn Monroe. And Tony Curtis again joins us in person! The show starts on the sidewalk with vintage cars and performers in vintage costumes.

Don't miss this extravaganza! It all takes place at the Million Dollar Theater in the heart of downtown's historic theater district. Matinee begins at 2:30 p.m., with tickets at \$8 (kids), \$10 (adults). The evening show begins at 7:30 p.m. with tickets at \$12. A day pass for both films is only \$20! For details and to get tickets on-line, go to www.LAHTF.org.

The Million Dollar Theater opened in February 1918 and is one of the first movie palaces built in the United States. It is the northernmost of the historical movie palaces in the Broadway Theater District, standing directly across from the landmark Bradbury Building.

The Million Dollar was the first movie house built by entrepreneur Sid Grauman, who later built Grauman's Egyptian Theatre and Grauman's Chinese Theater, both on Hollywood Boulevard, and was partly responsible for the entertainment district shifting from downtown Los Angeles to Hollywood in the mid-1920s. Sculptor Joseph Mora did the elaborate exterior ornament, including bursts of lavish Churrigueresque decoration, multiple statues, and longhorn skulls. The auditorium architect was William L. Woollett, and the designer of the twelve-story tower was Los Angeles architect Albert C. Martin, Sr. In the 1940s the theater was the second run house of the famous Orpheum circuit. Acts such as the Nat King Cole Trio, and Joe Liggins and The Honey Drippers performed on its stage.



Tony Curtis and Janet Leigh in *Houdini*

In 1949 the Million Dollar was taken over by Frank Fouce, a local Spanish language theater owner and film distributor. The Million Dollar Theater became the mecca of Spanish language, in particular Mexican, entertainment in the United States. Dolores Del Rio, Jose Feliciano, and Celia Cruz are but a few of the artists that worked for Empresa Fouce. The well known mariachi Los Camperos were founded to accompany the many Rancho performers when working the Million Dollar.

In the late 1950s Fouce founded Spanish International Communications Corp., named after his Spanish International Theater Company (which included the Million Dollar Theater and the Mayan Theater, also located in downtown Los

Angeles). This company comprised the first group of Spanish language and UHF television stations in the United States; KMEX Channel 34 in Los Angeles can trace its roots to the Million Dollar Theater. In addition to its successful stage productions, the theater was also the most prominent Spanish language cinema in the United States. Every major Mexican motion picture premiered at the Million Dollar. The most well known of these films were those of the world famous Mario Moreno ("Cantinflas").

After serving as the home of a Spanish-speaking church for some years, as of 2006 the Million Dollar theater is empty, although the office building was recently renovated and converted to residential space. In February 2008, the Million Dollar theater was re-opened, once again showing live Spanish theatre. It continues to draw large crowds with plans to begin screening major motion picture premieres. ●



Tony Curtis and Jack Lemmon in *Some Like It Hot*

WAHA 4th of July *continued from page 1*

around 1910, the house was owned by Clara Pitt Durant, whose husband Billy Durant founded General Motors.

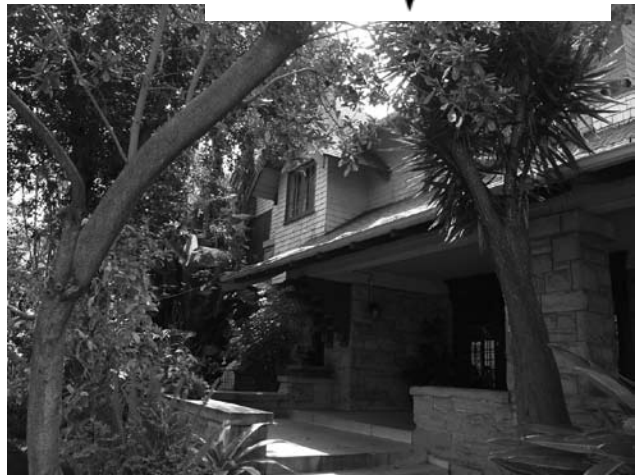
Live music – courtesy Gina Pitrello, whose professional name is Gina Jourard — and lots of fun is on the schedule. As always, Wa-hot dogs will be on the grill, cold drinks are on the house, and the potluck theme is summertime picnic -- please bring salads, main dishes, desserts, or fruits (enough for at least 10 people, please! And, let's avoid food that will melt on a summer day) to share.

A Las Vegas native, singer Gina Jourard has been vocalizing since high school before moving to Hollywood, where she led '80s and '90s bands Aesthetica, Naked, O the Band, and Kona Wind. Her singing adventures have led her to Japan, Denmark, France, Italy, and Holland.


Jourard's latest projects include a children's CD, Miss Gina's Rompin' Stompin' Round-Up (available on her website, www.MissGinaMusic.com).

You can catch her every Monday at Jax Bar and Grill in Glendale as part of the trio Brian Elliot and the Backseat Girls.

Don't miss Jourard singing favorites from the 1940s to 1980s at this year's WAHA 4th of July shindig! ●



Architect Sumner Hunt designed the "Invisible Manor" (far right) in 1908

JOHN D. KOSTREY 

TRUST YOUR LOCAL HISTORIC WEST ADAMS SPECIALIST

JOHN D. KOSTREY
Realtor, Broker Associate

Keller Williams Realty 310-621-4341 CELL
8560 W. Sunset Blvd., 3rd Flr. 310-432-8144 OFFICE
West Hollywood, CA 90069 888-214-7552 FAX
www.jdkrealtyla.com jdkreality@gmail.com

NO ONE KNOWS YOUR NEIGHBORHOOD BETTER THAN YOUR NEIGHBOR

Luis Gutierrez, CARPENTER

- CARPENTRY
- ANTIQUE MOLDINGS
- CABINETS
- DRYWALL REPAIR
- REMODELING
- INTERIOR PAINTING
- EXTERIOR PAINTING
- STAINING



CELL: 323-422-8158, PHONE: 323-290-9769



Historic Consultation & Research

Anna Marie Brooks
Phone 310-650-2143
Fax 323-735-3939
historichomesla@aol.com

AWARD PAINTING Co.

When quality counts! 30+ years experience

Dave Ward

2516 9th Avenue
Los Angeles, CA 90018
(310) 641-1235
(323) 766-9112



Lic. No. 502762
Bonded & Insured

www.AWARDPAINTING.COM

Greene & Greene On Tour *continued from page 1*

The self-guided *Landmarks of West Adams* tour begins in Victoria Park at the c. 1911 Herbert Clark Residence, 4325 Victoria Park Drive, a unique Craftsman residence with a curved window, parabolic piano niche and other engineering marvels built in by its original owner, an accomplished mechanical engineer.

Among the eclectic offerings on this tour is an 1887 farmhouse – right in the heart of now-urban Jefferson Park – shown in the process of a complete top-to-bottom restoration.

In University Park, visitors will tour a charming 1893 Queen Anne Victorian cottage designed by architect William Garrett for Franklin P. Frost. Nearby they will also visit St. Johns Episcopal Cathedral, a stunning 1925 Italian Romanesque house of worship that is both a local and national landmark. Designed by Los Angeles architects Walter and F. Pierpont Davis and described by critics at the time of its construction as one of Los Angeles's most beautiful churches, St. John's evokes medieval religious architecture, with stained glass, painted beam ceilings, gold mosaics, and an altar of Italian marble.

Visitors will also see the equally striking St. Sophia's Greek Orthodox Cathedral in the Byzantine-Latino Quarter on the edge of Harvard Heights. Inspired by the original St. Sophia of Constantinople, this resplendent Byzantine-Renaissance style church, built in 1952 by movie mogul Charles Skouras, boasts imported leaded glass and marble, 25,000 pounds of copper in its ceiling and extensive 24-karat gold leaf throughout its brightly-lit interior.

The movies are also represented on this tour by director-choreographer Busby Berkeley's former estate, the Guasti Villa/Peace Awareness Labyrinth and Gardens. Designed by architects Hudson and Munsell, this Beaux Arts mansion took four years to build, from 1910 to 1914. In recent years it was completely restored, with beautiful gardens descending several terrace levels down a hillside, and a expansive dining room serving the needs of its current owner, a religious organization. Tour visitors are invited to a luncheon buffet, 12:30 to 1:30 p.m. (separate ticket/fee of \$15; advance reservations and payment required.)

For many tour visitors, the highlight of *Landmarks of West Adams* may be the peek into the Greene & Greene-designed Wheeler House, owned until recently by noted restoration architect Martin Eli Weil, who passed away in February (his family has graciously agreed to open its doors this one day to the public.)

The Wheeler House retains most of its original features, along with elements of a 1917 remodel undertaken by the architects Train and Williams. Originally stained dark brown, the Wheeler House is now painted a nearly-identical dark brown hue. The original sand-finish plaster on the interior walls retain remnants of the original paint finishes. The original woodwork is largely intact, with the recent owner's handiwork evidencing a slow and painstaking restoration effort.

Charles and Henry Greene had arrived on the West Coast in 1893, summoned by their parents and fresh with architecture degrees from MIT. While traveling west, they stopped at the World's Columbian Exposition at Chicago, where they visited



Andre Jones Wood Company



*Specializing in Affordable, Quality, Customized
Cabinetry, Moldings, Wood Finishing,
Repair and Restoration*

Phone: (310) 740-1042 or (323) 732-7859
Fax: (323) 732-2484

MEASURE YOUR SUCCESS!

You could be losing money
and not even know it.

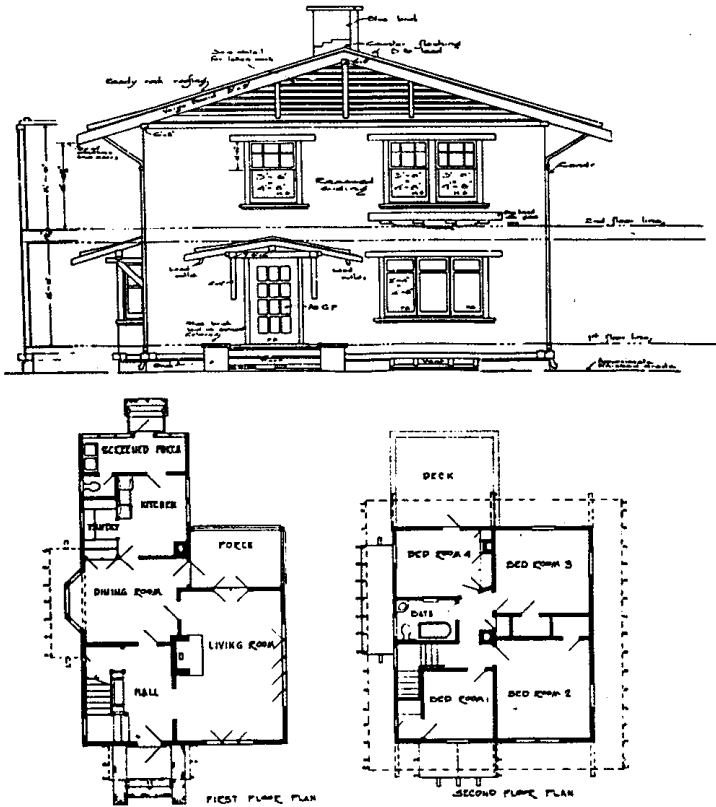
Do you know what your
business is worth?

Are you paying your fair
share in taxes?

*I am a CPA dedicated to
the success of small
businesses, providing tax
and consulting services to
help you achieve success.*

*Call Corinne Pleger at
323-954-3100.*

Brakensiek Leavitt Pleger, LLP



Blueprints for the Lucy E. Wheeler House

According to architect Weil, writing about his home before his death, “Lucy E. Wheeler was one of a significant number of women who hired the Greenes to design their homes in an era when women were not normally clients of architects.”

In 1905, Lucy Emery Wheeler commissioned the Greene brothers to design a moderate-sized middle-class Craftsman residence on a standard urban lot for herself, her mother and her sister. Wheeler, who was descended by a pioneer California family, was one of the first public stenographers and notaries in Los Angeles, with a dozen other stenographers and mimeographers in her employ. the Greene & Greene architecture firm routinely used Wheeler’s services to draw up contractor’s specifications for the company’s jobs.

It was designed and built when activity in the Greene & Greene office was about to reach its peak (some 150 projects were completed during the years 1902-1910), a period of time that the brothers created some of their finest work. Originally stained dark brown, the Wheeler House is now painted a nearly-identical dark brown hue. Most of its original interior elements are intact, including a rare example of an early kitchen and pantry, plus its original fixtures. The Wheeler House had been later divided into three units and is still undergoing a sensitive restoration, which was begun by Weil, who returned it to its original single family form.

Landmarks of West Adams is a self-guided, driving tour. Tour visitors will receive tickets, a tour brochure and map at check-in/will call. Check-in is in Victoria Park at 4325 Victoria Park Drive. Bicyclists are encouraged, and WAHA has prepared a special bicycle route/map for those who’d like to tour under their own pedal power. You may drive to the tour starting point and leave your vehicle, or ride in.

WAHA will e-mail confirmations to tour guests who register and pay in advance, and who provide e-mail contact information. The last ticket will be sold at 1 p.m., and most tour properties will close promptly at 4 p.m. (St. John’s will open at 1 p.m. and close at 4 p.m.; St. Sophia’s will be open Noon to 3 p.m.)

For more information, call 323-732-4223, write tours@westadamsheritage.org, or visit www.WestAdamsHeritage.org.

Tour at your own pace, but please do set aside several hours to enjoy the **Landmarks of West Adams**. ●

— by **Laura Meyers**

exhibits of Japanese architecture – a style that had a lasting impact on the pair’s work. In California, they at first explored but soon abandoned the then-popular Queen Anne Victorian style.

By the turn of the century, the Greene brothers had evolved their own singular aesthetic, a synthesis of the Swiss chalet, the Asian teahouse and the American log cabin. Their designs incorporated smooth rounded edges, elaborately pegged joints, intricate inlay, and a sinuous line reflective of both the Art Nouveau and Craftsman style.

By 1905, when they designed the Wheeler residence, popular magazines like *The Craftsman*, *House Beautiful*, *The International Studio*, *Country Life in America*, *House and Garden*, *Good Housekeeping*, and *American Home and Garden* were beginning to publish their designs, leading the way to the larger and grander commissions that made them famous. Like their parents, they had settled in Pasadena, which had acquired a reputation as a winter health resort. Wealthy Easterners and Midwesterners were spending the winter months at Pasadena’s large and elegant hotels, and soon were building winter homes in the town.

The Greene brothers preached total design, from the furnishings and landscaping down to handmade dowels and screws. That, of course, made Greene and Greene homes very expensive, but clients like David Gamble, heir to the Proctor and Gamble fortune, could well afford the tariff.



The brothers Greene late in life, in Carmel by the Sea

Preservation Matters

WAHA Advocates to Designate the Second Church of Christ Scientist Reading Room & Library

Cultural Heritage Commission Votes to Make Structure a City Landmark
by Laura Meyers

Sometimes we take for granted that the historic buildings we drive by in West Adams every day actually are designated as official historic landmarks. Such was the case for the Reading Room and Library of the Second Church of Christ, Scientist, located just south of Adams on Hoover Street, adjacent to the imposing Second Church itself.

The Second Church of Christ, Scientist, designed by Alfred H. Rosenheim with Albert C. Martin, built 1907-1910 and designated Los Angeles Historic Cultural Monument No. 57 in 1968, is considered perhaps Los Angeles's most imposing Neo-Classical landmark and one of Los Angeles's most important cultural resources. The church sanctuary dominates its setting and is visible from great distances, with a colossal Corinthian portico and copper-clad dome dominating the design. "Closely resembling portions of the Mother Church in Boston, the building exemplifies the continuity and quality of craftsmanship present during the primary period of development of Christian Science," according to its National Register of Historic Places Inventory-Nomination Form (declared 4/2/1987).

The Second Church of Christ, Scientist Reading Room and Library was designed by Leon Joseph Corbey and built 1941-1942. While not well known, Corbey, a Christian Scientist himself, worked for illustrious architectural firms (Pond & Pond in Chicago, and A.M.Edelman here in Los Angeles), and at least one other church building he designed (in Wisconsin) is now listed on the National Register.

Most West Adams historic preservation advocates believed the Reading Room was included as part of the official landmark designations of the church sanctuary building, since city policy has long been that ALL structures are included when historic cultural monuments are recorded with the County of Los Angeles.

Earlier this year, however, we discovered that this case is the exception; the Reading Room was not officially included in the sanctuary's case file.

As a result, Mitzi March Mogul and this writer speedily researched and submitted a detailed Historic Cultural Monument application form, along with photographs taken by Jim Childs, all as a part of WAHA's Historic Preservation Committee's work to identify and protect historic resources. We proposed that the Cultural Heritage Commission either amend the original HCM nomination to include the Reading Room or to designate the building on its own accord. We pointed out, though, that the Reading Room and the sanctuary church building have a long historic and cultural association with each other.

WAHA's nomination had (and still has) a potentially bumpy road. The property is no longer owned by the Christian Science church, and the new owner/recent purchaser has placed both buildings on the market again. The church sanctuary building is being appropriately marketed as a "historic landmark," but at least some of the real estate advertising declared the Second Church of Christ, Scientist Reading Room parcels as "vacant" land. At least one potential developer has approached city officials with a plan to demolish the building and to erect a five-story student housing complex that would be several stories taller than the historic and character residential structures immediately to the north and south. One of the parties in these transactions (or potential transactions) hired a historic consultant to oppose WAHA's nomination.

The Cultural Heritage Commission considered the matter at their May 16 meeting, previously having toured the Reading Room. After WAHA presented its report, well-known historic preservation professional Christy McAvoy spoke in our support, explaining that she was very familiar with both the property and with Christian Science religious practice. McAvoy's firm, Historic Resources Group, is working on the context statements that will form the core of Survey L.A., and she spoke eloquently about how in the past



Los Angeles has designated many church buildings for their architectural beauty while seldom acknowledging their cultural and social significance nor the role churches have played throughout Los Angeles's history. McAvoy had prepared the original historic assessment for the Community Redevelopment Agency in 1985, and the National Register nomination for the sanctuary the following year.

The opposition also presented a ten-minute argument against designation, but in the end the Commission voted, without comment, to say "yes" and recommend that the Second Church of Christ, Scientist Reading Room and Library be added to the list of Los Angeles Historic Cultural Monuments. This vote will now be transmitted to the City Council for final action, presumably sometime in the next month or two.

Here is the introduction and technical summary WAHA prepared to introduce the full HCM nomination package:

[The Reading Room] has a symbiotic relationship with its church sanctuary building. Along with the basic fact that the two parcels have been held in single ownership since approximately 1926, and were conveyed to the present owner with a single grant deed, the two buildings are indelibly linked by their history, design relationship and religious practice. Each building communicates important information about the other.

The Second Church of Christ, Scientist sanctuary building and the Second Church of Christ, Scientist Reading Room and Library are individually and together a site of particular importance in the architectural and social history of the University Park/West Adams community. The Second Church of Christ, Scientist complex reflects the rise of the West Adams as a suburb for prominent early settlers in Los Angeles who established business and cultural institutions in the City, and then documents the change in West Adams and all of Los Angeles as the City transitioned to an automobile-reliant metropolis.

The Second Church of Christ, Scientist is represented in a prior Historic Resources Survey (Phase I Survey of Expanded Hoover Redevelopment Area, Los Angeles Community Redevelopment Agency, 1985) and in that survey was established as having historical significance, according to author Johnson Heumann Research Associates, due to its "Historic Association with Second Church of Christ, Scientist on Adams" as well as its being an "intact example of Georgian style." This assessment was certified by the Community Redevelopment Agency's (CRA) board and the Second Church of Christ, Scientist Reading Room and Library was added to CRA's list of historic resources. A more recent survey observes that it remains "in good condition with no apparent visible alterations since the property was last evaluated," therefore not changing the original certified assessment.

This present submission proposes amending the original LA-HCM No. 57 to include the Second Church of Christ, Scientist Reading Room and Library structure and the entire single ownership of the associated properties. Alternatively, the Second Church of Christ, Scientist Reading Room and Library is extremely significant on its own, as an exemplar of the practice of Christian Science in Los Angeles.



(continued on next page)



Colour, Planning and Design Services for
Historically Sensitive Properties
Winner 2003 WAHA Paint Award
2650 Kenwood Avenue Los Angeles, California 90007
Phone: 323.733.8433 Fax: 323.733.8434
Email: info@iccidesign.com

DAVIDSON PLUMBING CO., INC.
(Estab. 1927) **REPAIR SERVICE** Lic. 415997



RESIDENTIAL, COMMERCIAL & INDUSTRIAL
BACKFLOW TESTING
SE HABLA
ESPAÑOL **JOSE NAVIDAD**

Address all communications to
1116 WEST 24TH STREET • LOS ANGELES, CA 90007
800-974-5325 • (213) 749-1046 • Fax: (213) 748-2734

Preservation Matters

Second Church of Christ, Scientist

continued from page 9

Significance: Ordinance Criteria

SECTION 22.130 OF THE LOS ANGELES ADMINISTRATIVE CODE DEFINES A CULTURAL-HISTORIC MONUMENT AS:

ANY SITE (INCLUDING SIGNIFICANT TREES OR OTHER PLANT LIFE LOCATION THEREON), BUILDING OR STRUCTURE OF PARTICULAR HISTORIC OR CULTURAL SIGNIFICANCE TO THE CITY OF LOS ANGELES, SUCH AS HISTORIC STRUCTURES OR SITES IN WHICH THE BROAD CULTURAL, POLITICAL, ECONOMIC, OR SOCIAL HISTORY OF THE NATION, STATE OR COMMUNITY IS REFLECTED OR EXEMPLIFIED, OR WHICH ARE IDENTIFIED WITH HISTORIC PERSONAGES OR WITH IMPORTANT EVENT IN THE MAIN CURRENTS OF NATIONAL, STATE OR LOCAL HISTORY, OR WHICH EMBODY THE DISTINGUISHING CHARACTERISTICS OF AN ARCHITECTURAL-TYPE SPECIMEN, INHERENTLY VALUABLE FOR A STUDY OF A PERIOD, STYLE OR METHOD OF CONSTRUCTION, OR A NOTABLE WORK OF A MASTER BUILDER, DESIGNER, OR ARCHITECT WHOSE INDIVIDUAL GENIUS INFLUENCED HIS AGE.

The Second Church of Christ, Scientist Reading Room and Library meets the ordinance criteria for monument status in which the broad cultural, economic, or social history of the nation, state, or community is reflected or exemplified. It also demonstrates historic significance because it reflects and exemplifies the diversity of Los Angeles, a city that is home to many diverse religions and individuals with a spectrum of spiritual beliefs.

The Second Church of Christ, Scientist (HCM No. 57) and the Second Church of Christ, Scientist Reading Room and Library together convey the story of an important part of Los Angeles's social history, and each building imparts meaning and significance to the other.

The Second Church of Christ, Scientist Reading Room and Library also meets the ordinance criteria for monument status because it embodies the distinguishing characteristics of an architectural type specimen, inherently valuable for a study of a period, style, or method of construction. The Georgian Revival style of the building exemplifies Christian Science principles of both design and religious practice. ●



JOHN AAROE GROUP

aaroe + williamson division



John Aaroe, Founder & President
Michael Williamson, Partner & Manager

Are Proud To Welcome

Natalie Neith

Ken Catbagan

Ken Catbagan
323.595.9413 cell
318.783.7721 office
318.783.7211 fax
ken@natalieneith.com
NatalieNeith.com

Natalie Neith
323.595.9414 cell
818.783.7721 office
818.783.7211 fax
neith@natalieneith.com
NatalieNeith.com

849 S. Broadway | Suite 704 | Los Angeles, CA 90014

JohnAaroeGroup.com



M/H DESIGNS

- Re-Upholstery
- Custom Furniture
- Furniture Restoration & Refinishing
- Interior Design Services

805-584-2600 mhdesignsca@aol.com
www.mhdesignsca.com

Stained Glass

Enhance your home!

Expert Repair & Restoration – Free Estimates

Custom Designed Windows ♦ Repairs
Classes ♦ Supplies ♦ Gifts

Lighthouse Stained Glass

5155 Melrose Ave., L.A. (at Wilton), 323-465-4475
www.LighthouseStainedGlass.com

Native Garden

continued from page 1

or variety, come and walk in my garden. Southern California has the second-largest number of plant varieties in the world, with 6,000. South Africa is number 1. So you can create a garden of almost infinite complexity or simplicity without having to use foreign plants. Native plants are more resistant to disease (seen the *Eugenias* lately?) and take little to no water in the summer when natives go dormant. They have evolved to grow when nature's irrigation system is on, i.e. fall, winter and spring. By early April you will see golden poppies and other wildflowers blooming in my garden. (I think it is funny that my wildflowers are carefully planted).



Anyone interested in learning more about my experience, please contact me at hilburg@ca.rr.com. But if you want to see native plants on 80 acres go to the Rancho Santa Ana Botanic Gardens in Pomona. Many Los Angeles botanic gardens have a native plant section. You can also learn about natives from the Theodore Payne Foundation in Sun Valley, although they also come to the Hollywood Farmer's Market on Sunday. Or you can join the Los Angeles chapter of the California Native Plant Society.

This is not the end of my story, but a new beginning. My garden will change, as it matures and as my tastes and knowledge mature and grow with it. In addition, I have started an eating or kitchen garden

(See if you can recognize where it is). More on that later. ●

WAHA welcomes YOUR gardening story. Please e-mail WAHA Matters editor Laura Meyers at lauramink@aol.com.



WAHA Paint and Garden Contest

Have you recently painted your home in new, perfect colors? Or, is your old paint job still looking fabulous? And, how does your garden grow? Is it an extraordinary cottage garden, or prime example of drought-resistant beauty?

Each year, WAHA looks for the best new exterior paint finishes in the West Adams area and the most spectacular gardens among us. We hope you had a chance to finish your painting, plant your garden, and prepare your digital photographs, because now is the time to submit the digital photographs for judging.

For exterior paint nominees, the work must have been completed within the last year ending NOW (e.g., started anytime, but finished between July 1, 2008 and June, 2009.) Gardens have no time limits. In both cases, we are looking for beautiful WEST ADAMS properties.



You may also nominate a West Adams' neighbor's paint or garden if the property meets these criteria.

The deadline for nominations is Friday, June 19. The nominations **MUST** be in the form of a digital photo or photos, along with a written description of the planted garden or restoration paint job. Tells us what you did to accomplish your thing of beauty.

We'll all have a chance to review the lovely photos of your garden/ exterior paint job at WAHA's annual 4th of July picnic, and to vote on the best of these best. Please submit your nominations to WAHA via e-mail, news@westadamsheritage.org. Problems? Call Laura Meyers if you need to, at 323-737-6146 (she is coordinating the printing and display of these photos).

What's in it for the winners? Besides a lot of pride in a job well-done, your garden and/or your exterior paint job will be lauded in a future WAHA Matters and you will win bragging rights for at least one year. ●

Living History Tour: Call for Volunteers

WAHA's annual Living History Tour takes place every autumn at Angelus Rosedale Cemetery. Amid the elaborate headstones and monuments, costumed actors bring to life – and tell the stories of – a half dozen fascinating residents from Los Angeles' earlier times. This year's tour is slated for Saturday, September 26, and we invite your participation now to help on its organizing committee.

Whose stories will be told this year? Will it be the swing band leader? The actor who performed with Orson Welles' troupe? The pioneer Los Angeles judge? The suffragette who helped women get the vote? The former California governor? How about a Rootin' Tootin' Hollywood cowgirl? The father of the first baby born in Los Angeles as an American citizen?

Will it be the Civil War Naval officer? The Chinese immigrant who became a successful businessman? Any one of the founders/mayors of smaller cities encircling Los Angeles? The architect of some of West Adams' most beautiful mansions? The Christian Science leader? The widowed murder victim who inspired a major motion picture? Or let's consider the philanthropist who paid for a \$100,000 telescope -- or his wife, an author and friend to such notables as John Muir?



WAHA's Living History Tour Committee not only selects the personages for portrayals (these or others), it also researches and writes the scripts, casts the actors, costumes them, creates graveside vignettes, and, of course, also organizes the tour itself, with all the myriad accompanying tasks. There will be a few random meetings scheduled in June and July, with a more regular schedule of meetings in August and September. Would you like to help? Please contact Laura Meyers at lauramink@aol.com or 323-737-6146, or write tours@westadamsheritage.org. ●



MEMBER DISCOUNTS

The following companies offer discounts to WAHA members. Remember to show your WAHA membership card when you make your purchase.

Silverlake Architectural Salvage

1085 Manzanita Street, Silverlake,
323-667-2875
20% discount on all purchases

Ted Gibson, Inc.

2866 West 7th St. Los Angeles 90005,
213-382-9195
20% discount on purchases of art materials and picture frames

Best Lock and Safe Service

contact: David Kim
2203 W. Venice Blvd., Los Angeles, 323-733-7716
10% discount on lock and safe labor and materials

Washington Dog & Cat Hospital

1692 W. Washington Boulevard, Los Angeles,
323-735-0291
50% off office exams

Meyers Roofing

5048 W. Jefferson Blvd., 323-733-0188
10% discount

Lighthouse Stained Glass

5155 Melrose, 323-465-4475
20% discount off regular class prices with WAHA membership card

Cafe Club Fais Do Do

5257 West Adams Blvd., 323-954-8080
No cover charge at door, and 20% discount on all meals.

Sherwin-Williams

1367 Venice Blvd. 213-365-2471
20% off regular product price (with WAHA discount card)

Durusseau Electric

2526 W. Jefferson Blvd. 323-734-2424 or
323-734-6149 (cell)
10-15% discount on electrical services

Lady Effie's Tea Parlor

453 East Adams Boulevard, 213-749-2204
10% discount on all food purchases

Los Angeles Stripping & Finishing Center

1120 N. San Fernando Road, Los Angeles,
323-225-1073
5% discount on any single service order over \$1000.
No special discount on materials.

Lucky Chimney Sweep

Contact: Susan and Alfredo Johnson, 11433 Ruggiero
Ave., Sylmar, CA, 91342, 323-258-0828
10% discount on: masonry repair and restoration,
chimney cleaning

Magic Care Termite Service

1840 W. 220th St., Suite 320, Torrance 90501,
310-548-6700
15% discount

Pasadena Architectural Salvage

305 S. San Gabriel Blvd, Pasadena (Tues-Sun),
626-535-9655 www.pasadenaarchitecturalsalvage.com
10% discount on all purchases

Papa Cristo's Taverna

2771 West Pico Blvd. 323-737-2970
10% discount on catered food orders

8th Avenue Cafe

Inside Ken's Market, 8400 South 8th Ave., Inglewood
323-294-9706, www.purelycatering.com
20% discount on 1st visit – 10% for each later visit

McCabe Property Management

2461 Santa Monica Blvd., #235, Santa Monica
310-828-4829; fax 310-828-7959
www.mccabepropertymanagement.com
Reduced set-up fee of \$50 for any property (\$150 savings)

Ti-KEN Personal Account Manager

310-701-2399; fax 310-828-7959
ti.ken.manager@gmail.com
Reduced set-up fee of \$100 for new account (\$150 savings)

Port Royal Antiques

1858 West Jefferson Blvd. 323-734-8704
10% discount

Real Door

3125 La Cienega 310-836-2687 www.realdoor.com
10% discount on products and services

Vintage Plumbing Bathroom Antiques

9939 Canoga Avenue, Chatsworth, 818-772-1721
(hours: by appointment only)

10% discount on purchases at Chatsworth facility

Boulevard Vacuum & Sewing Machine Co.

5086 W. Pico Boulevard, 323-938-2661
10% discount on sale of new vacuums, and vacuum
service & repair

Jonathan Bert Rollup Window Screens

626-359-0513
5% discount on repairs or installations of rollup screens

A CALL TO MEMBERS

If you frequent a local business — retail store, restaurant, service provider, etc. — ask them if they would offer a discount to WAHA members. Explain that they'd benefit from the increased exposure to local consumers, and be listed in the WAHA monthly newsletter. Or, call me at 323-733-6869 and I'll contact them — Steve Wallis

Community Matters

In Memoriam: Melody Jackson (1946-2009)

West Adams resident, WAHA member and lover of historic houses Melody Jackson passed away on May 2, after a long battle with cancer. Melody was very active in the Arlington Heights neighborhood of West Adams, working tirelessly at the beginning of this decade toward the goal of having the community become an HPOZ. She also was one of the founders of the United Neighborhoods Neighborhood Council (UNNC), serving as Arlington Heights' regional representative in UNNC's first few years.

Many WAHA members will remember Melody as a longtime volunteer, as a docent, and as a house captain for our tours.



She also generously invited all of us into her then-newly restored home for a potluck gathering and membership meeting some years ago.

Melody was named for her father's love of music. Henry Johnson and Melody's step-mother, Eloise Johnson — and her brother, Henry Jr. — were all musicians, and growing up in Rochester, New York, surrounded by music helped influence Melody's own passion for the arts in adulthood.

Melody also loved travel, and started her career working for American Airlines. She eventually moved with her

family to St. Thomas, Virgin Islands, where she landed a job working for the Virgin Islands Film Festival. In turn, in 1976 she moved to Los Angeles to further her career in the entertainment industry. Eventually, Melody won two Emmys for her professional work at KTTV. She later freelanced at both CBS and NBC, and then settled in at NBC as a writer/producer for On-Air Promotions.

Her creative flair also translated into a passion for art. Melody collected paintings and other art objects, especially works from Haiti, which she visited many times. And she was herself an artist: in recent years her hobby of photography turned into a dream fulfilled. She traveled to many parts of Africa to shoot wildlife, entering her images in photography contests (and being named a finalist in several). A national magazine published her photographs. According to friends and family members, Melody was fearless and often placed herself in what others would call risky situations, just to get the shot.

Melody was a dedicated member of the Wilshire Ebell and served on the Board of Directors. She was equally dedicated to the Greater Ebenezer Baptist Church.

She is survived by her daughters Kimberly and Scean, Scean's husband, Steve Ellis, and three grandchildren. ●



David Raposa • Broker/Owner
323-734-2001

*City Living Realty has been selling
architectural treasures in
Historic West Adams since 1981.*

IN ESCROW

Jefferson Park Spanish — (*Adam Janeiro, buyer's agent, 323-401-3952*)

West Adams Avenues Colonial — (*Nancy Deaven*)

SOLD

Wellington Square Fixer — Watch this Colonial come back to life! (*David Raposa, buyer's agent*) Congratulations, Chelina Odbert and Tendo Nagenda!

FOR LEASE

French Country Revival Apartment in West Adams Avenues — Just restored! 2-story, 2-bedroom, AC, hardwood floors, \$1,800/mo. (*Contact David Raposa*)

*David Raposa, Conrado Alberto,
Darby Bayliss, Nancy Deaven,
Jane Harrington, Suzanne Henderson,
Adam Janeiro, Carlton Joseph*

Our Offices are in the Victorian Village,
2316 1/2 S. Union Ave., Suite 2, 213-747-1337



City Living Realty

We handle all your buying and selling needs —

Please refer us to your friends!

Membership Application

Become a member (or renew)!

Annual Membership

Name(s) _____

Address: _____

Phone: _____

E-mail: _____

Membership classification (check one)

- ___ Individual/Household \$ 45.00
- ___ Senior/Student \$ 25.00
- ___ Preservation Circle \$ 100.00
- ___ Business/Corporate \$ 200.00
- ___ Heritage Circle \$ 250.00
- ___ Patron Circle \$ 500.00
- ___ Benefactor \$1,000.00

Please make check payable to WAHA.

Return to: WAHA
2263 S. Harvard Blvd
Historic West Adams
Los Angeles, CA 90018

___ *Please DO NOT include my name, address, e-mail, or telephone in the WAHA membership directory.*

We support preservation of the West Adams community's architectural heritage and beautification activities, and seek to educate Los Angeles' citizens and others about cultural heritage and restoration techniques.



West Adams Heritage Association
2263 S. Harvard Boulevard
Historic West Adams
Los Angeles California 90018
323-735-WAHA (323-735-9242)
www.WestAdamsHeritage.org

BOARD OF DIRECTORS

Officers

- Jim Robinson, *President* 213-749-8151
- Eric Bronson, *Vice-President* 323-737-1163
- John Patterson, *Vice-President* 213-216-0887
- Lore Hilburg, *Secretary* 323-737-4444
- Jean Cade, *Treasurer* 323-737-5034

Board Members

- Lisa Berns 323-299-9009
- SeElcy Caldwell 323-292-8566
- Jean Frost 213-748-1656
- Jonathan Hugger 323-733-8861
- Suzanne Lloyd-Simmons 323-733-8084
- Michael Medina 310-428-9263
- Gail Peterson
- Roland Souza 310-392-1056
- Judy Tedrick 213-748-5627
- Candy Wynne 323-735-3749

ADVISOR

- Harold Greenberg, *Legal Advisor* 323-732-9536

**COLDWELL
BANKER**

RESIDENTIAL BROKERAGE

HANCOCK PARK

CELEBRATING 100 YEARS

Preserving the Trust

TRULY REMARKABLE SERVICE

JOHN WINTHER, MANAGER

HANCOCK PARK NORTH
OFFICE 323.464.9272

HANCOCK PARK SOUTH
OFFICE 323.462.0867

©2007 Coldwell Banker Real Estate Corporation. Coldwell Banker is a registered trademark licensed to Coldwell Banker Real Estate Corporation. An Equal Opportunity Company. Equal Housing Opportunity. Owned and Operated by NRT Incorporated.

PETS

**They
grow
on you.**

Washington Dog & Cat Hospital, Inc.
1692 West Washington Boulevard
Los Angeles, California 90007
323-735-0291

- Boarding and Grooming
- Pickup and Delivery
- Low Cost Vaccinations Available

Hours

Monday-Friday: 7:30 am-12 Noon; 2-5 pm
Saturday: 7:30 am - 2 pm
Sunday: 10 am -12 Noon

ADVERTISE HERE!

Advertisers are responsible for preparing their own camera-ready art for display ads. To place a display ad, call Judy Tedrick at 213-748-5627. WAHA classifieds are free to paid members. If you can, please e-mail your classified ad to lauramink@aol.com. Classifieds will be for one month only.

ADVERTISING RATES

FOR DISPLAY ADS

This Newsletter is published 11 times a year

Full Page: \$175 monthly; \$1,800 annually

Half Page: \$90 monthly; \$950 annually

1/4 Page (4 1/2 x 4 1/2): \$48 monthly; \$500 annually

Business Card (3 3/4 x 2 1/4): \$25 monthly, \$260 annually

The deadline for ad content is the 1st of the prior month.

Please Note: WAHA does not endorse or claim responsibility for any of the services, products or items for sale that advertisers have listed in these pages.

WAHA CLASSIFIEDS

Restored Craftsman to lease. Two bedrooms, 1 1/2 baths, formal dining room, huge living room with working fireplace. Gourmet kitchen with concrete countertops and a wet bar. Washer/drier. Hardwood floors throughout. Large, award winning garden with koi pond. utilities not included Available mid June. \$2500 per mo. Please call Rory: 213-384-7725.

House cleaning person available in West Adams. Hard worker. For information call: 323-422-8158

Day Bed - Antique Style, with mattress, and trundle bed. \$425.00. Call: 323-731-2010.

100s of doors (and other historic architectural materials) for sale — Contact Roland, 310-392-1056.

Roommate Wanted? Vintage Stove for Sale? Garden Plants in Search of New Home? Place your classified ad here to reach preservation-minded readers. Contact lauramink@aol.com, NO LATER THAN the first of the prior month.



INSURING OUR COMMUNITY

UNDERSTANDING THE
SPECIAL NEEDS OF
HISTORIC WEST ADAMS
HOMES AND BUSINESSES

KIM-LAI JONES
VICE PRESIDENT



12100 WILSHIRE BLVD | SUITE 300
LOS ANGELES | CA | 90025
310-207-9796 | FAX 310-207-5337
KJONES@ELKINSJONES.COM

WAHA's 2009 "No Excuses" Calendar

We are planning a full slate of activities for 2009. Please put these event dates on your calendar.

JUNE

Saturday, June 6:

WAHA presents its Annual Spring Historic Homes & Architecture Tour

JULY

Saturday, July 4:

WAHA's Annual 4th of July Picnic

AUGUST

Thursday, August 6:

WAHA New Member Dessert

SEPTEMBER

Saturday, September 26:

Living History Tour at Angelus Rosedale Cemetery

DECEMBER

Saturday and Sunday, December 5 and 6:

WAHA's Annual Holiday Tour and Progressive Dinner

Sunday, December 13:

WAHA Holiday Party

**WAHA....Creating Our Future by
Preserving Our Past**

Calendar ✓

Upcoming Events

Saturday, June 6:

WAHA Presents its Annual Spring Historic Homes & Architecture Tour, including a rare



peek inside L.A.'s only Greene & Greene, pictured left. (see story, page 1)

Monday, June 8:

Membership Meeting (see page 2)

Thursday, June 11:

Public hearing on Cultural Heritage ordinance (see page 2)

Saturday, July 4:

WAHA's Annual 4th of July Picnic

Please review WAHA's 2009 Calendar of Events, on page 15

WAHA's Patriotic 4th of July

Saturday, July 4

1 to 4 p.m.

1909 Harvard Blvd. (West Adams Heights)

Bring the kids -- your own or someone else's -- and wear your summer whites or patriotic attire at WAHA's annual 4th of July picnic. Owners Todd Karr and Gina Pitrello are hosting WAHA's annual event celebrating America's birthday. Their historic 1908 Craftsman manse (pictured below) was designed by famed architect Sumner P. Hunt.

Live music and lots of fun is on the schedule. As always, Wa-hot dogs will be on the grill, cold drinks are on the house, and the potluck theme is summertime picnic -- please bring salads, main dishes, desserts, or fruits (enough for at least 10 people, please! And, let's avoid food that will melt on a summer day) to share. (See story, page 1)



The WAHA Newsletter is a publication of the West Adams Heritage Association. Members and supporters of WAHA are invited to submit articles to the Newsletter. Letters will be published subject to space constraints and will be cut for length if necessary. Articles will be published subject to acceptance by the editors of the WAHA Board. Advertising is subject to the approval of the publishers. Although the Association appreciates its many fine advertisers, the Association does not accept responsibility for claims made by advertisers. Services and products are not tested and appearance of advertising does not imply, nor does it constitute, endorsement by the West Adams Heritage Association. Copyright 2009. All rights for graphic and written material appearing in the newsletter are reserved. Contact Director of Publications for permission.

WAHA 
West Adams Heritage Association
2263 S. Harvard Boulevard
Historic West Adams
Los Angeles California 90018

ADDRESS CORRECTION REQUESTED